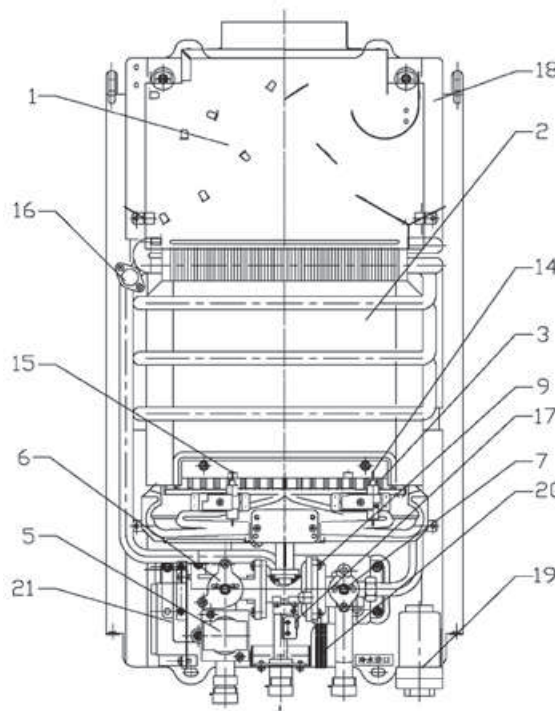




- Power and temperature selector
- Flue gas evacuation control device
- Electronic ignition with flame detection by **ionisation**
- Electronic, **battery** powered, ignition
- **Modulating** gas valve, activation upon double signal
- Output regulation from 40% to 100%
- SOFT START device for **progressive and silent ignition**
- Extremely easy installation and maintenance
- Safety device for protection against insufficient water
- Certified also for operation with **butane** (G30) or **LPG** (G31)

SCHEME



KEY

- 1 draugh diverter
- 2 heat exchanger
- 3 burner
- 5 gas valve
- 6 power adjustment knob
- 7 temperature selector
- 14 ionisation electrode
- 15 ignition electrode
- 16 limit thermostat
- 17 ignition microswitch
- 18 flue gas control device
- 19 battery box
- 20 water relief valve
- 21 control board



MODEL			5	11	14
DHW tapping profile			XS	M	M
Erp Class			A	A	A
Heat input	Max	kW	10,1	21,1	26,8
	Min	kW	3,6	7,1	9,3
Heat output	Max	kW	8,9	18,9	23,8
	Operating pressure	Max	bar	10	10
DHW flow rate	Δt 25°C	l/min	5,1	10,8	13,7
	Δt 50°C	l/min	2,6	5,4	6,8
DHW set point	Min	°C	40	40	40
	Max	°C	65	65	65
Dimensions	WxHxD	mm	280x455x130	328x550x130	400x650x181
CODE (see page 5)			-	GCT1MBAA	GCU1PBAA